

# Hanging instructions

## General information

- Please check that the delivered product matches your order (pattern number, length, batch number, shade) and that it has not been damaged during transport (otherwise please mention any reservation on the carrier's delivery receipt).
- The D.T.U 59.4 "Applying wallpaper and wallcoverings" document published by AFNOR in line with industry standards NF P 74 -204 - 1&2 provides guidelines to hang wallcoverings and engages the hanger's responsibility. It will be used as a reference in the event of a dispute.
- Additional length is added to orders where a defect is indicated on the edge of the wallcovering. Should a fault be indicated on the edge of the paper, additional length will be added. Should you notice any non-reported fault, or encounter any problems while hanging, please stop immediately and contact us. No complaint may be accepted if more than 3 strips have been laid, be it for the wallcovering itself or for hanging and stripping expenses.
- Always store rolls on a flat surface and in a dry place. Make sure lighting is sufficient to check and hang the wallpaper correctly. Hang 3 strips then check the result.
- Recommended conditions:  
+10 °C < Temperature > +30 °C  
Hygrometry < 65% RH

## Preparing the wall

The hanger assumes liability for preparing the wall  
**A WELL PREPARED WALL = 80% OF THE JOB'S SUCCESS**

- Walls must be:

**Solid:** the wall must be resistant, stable and hard.

**Sound and dry:** sources of damp must be treated, any saltpetre and mold removed.

**Clean:** remove any dust and previous wallcoverings, then wash.

**Smooth and even:** to ensure a neat finish.

**Uniform:** to prevent transparency.

- Of average absorbency (water drop test), otherwise:

For new, overly absorbent walls (plaster, plaster render, plasterboard, cement), apply a thin layer of primer such as Metylan I 200 or diluted acrylic paint.

For soft or crumbly old plaster walls, apply a hardener such as Metylan I 400 or a coat of glycerophthalic primer diluted by adding 20 to 30% of white spirit.

Old, sealed, walls (lacquered or painted with fully adhesive oil-based paint) should be washed using an alkaline solution and rinsed.

## Choosing the adhesive

- On walls with average absorbency:  
OVALIT TM, by Metylan (HENKEL)  
Apply with a medium nap roller, such as a 12 mm nylon bristle  
Load well to apply 250 g/m<sup>2</sup>
- On sealed walls:  
OVALIT F (+/- 250 - 300 g/m<sup>2</sup>)  
Apply using a foam roller such as CREPI FIN
- For specific areas such as joints (doors, skirting), inner and outer corners, posts, ceiling edges:  
OVALIT F with a B2 or B3 serrated spatula to ensure smooth coverage and avoid overflow, use around 400 g/m<sup>2</sup>.

## Tools

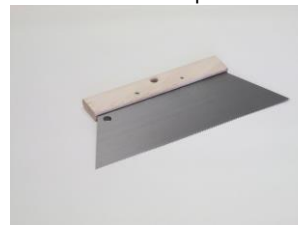
Wallpaper spatula



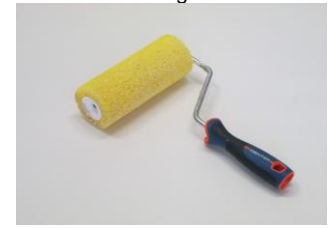
Rubber smoothing roller



Serrated spatula



Pasting roller

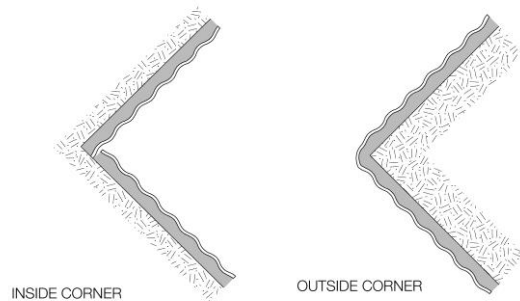
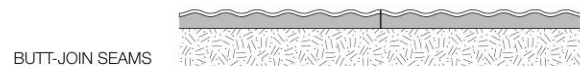
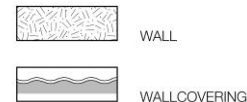
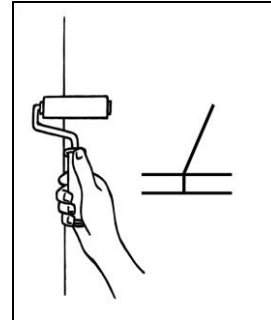
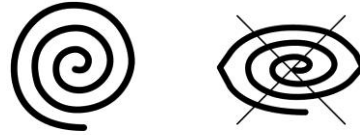


Cutting tool such as a Stanley knife



## Hanging

1. The wallcovering should be hung in the order marked on the rolls. Likewise, number each strip and hang in numerical order.
2. Cut the strips and roll them up into non-tightened rolls, with the pattern on the inside – see demonstration video. Do not fold or crush the wallcovering as this may mark the foam.
3. Apply the adhesive following the instructions below. Paste a surface the size of about 1 strip + around 10 cm, from bottom to top.
4. Check that it is level, then lay the 1<sup>st</sup> strip on the freshly applied adhesive. Smooth upwards using a rubber roller, so that the covering is not deformed. Do not press too hard around the edges of the strip as this could cause shrinkage of the area covered by the wallcovering.
5. Hang the 2<sup>nd</sup> strip edge to edge to create a butt seam, following the direction and match repeat shown in the appendix. To make it easier to hang the strip and create the seam, please fold the wallcovering in half widthways. Once the butt seam has been completed over +/- 1m, unroll the rest of the length horizontally onto the adhesive and continue the seam across the top part before smoothing.  
  
A butt seam is easier to achieve, however you can also opt for a double cut overlap using a fine bladed cutter or Stanley knife.
6. Once the strips have been joined, smooth over the seam with the rubber roller, across both strips at the same time to prevent a dip. If the two strips are not perfectly joined, bring them closer together by gently brushing the wallcovering with the palms of both hands in concentric circles, placing hands +/- 20 cm from the seam and pressing lightly. Do not press the seam with your fingers or any other tools.
7. Trim at the ceiling and skirting using a fine bladed cutter or Stanley knife and fixing the wallcovering securely to the adhesive with a wide, rigid spatula.
8. If adhesive spills over on to the wallcovering, remove the surplus with the tip of a spatula and wash the remainder with a clean sponge and warm water. If any adhesive remains once dry, repeat the procedure using warm water, adding a little adhesive dissolvent if required.



## Technical information

- Should you need any further information, should you need help getting started please contact the Texdecor team on

**Tel 0033 (0)3 20 61 75 41**

- You may find every technical and legal documents concerning Texdecor wallcoverings (DoP, technical data, hanging instructions, FR certification, etc) on our website

**[www.texdecor.com](http://www.texdecor.com)**

Texdecor, 2 rue d'Hem, 59780 Willems. Head Office - France

- Declaration of performance:

DoP – CPR – SIGMD - 58 available from [www.texdecor.com](http://www.texdecor.com)